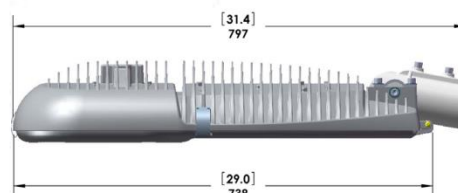
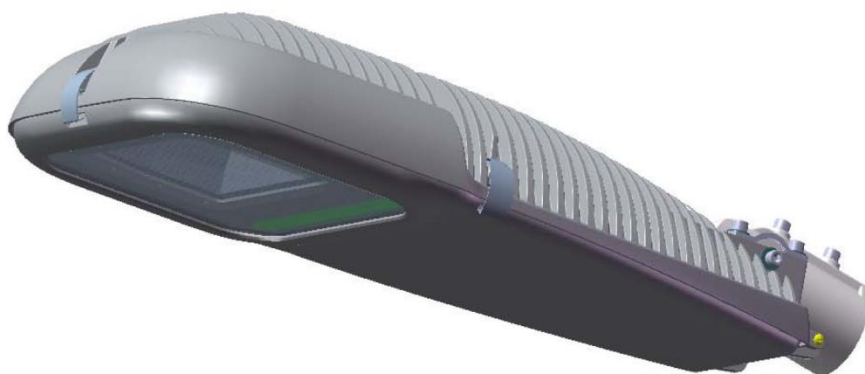


R Series Roadway Luminaire

Featuring Light Emitting Plasma™ from LUXIM®



HOUSING - Single piece die-cast aluminum casing for optimal thermal performance and resistance to outdoor environments. All fasteners are stainless steel.

DOOR / LENS FRAME - Tool-less single piece die-cast door frame (hinged for ease of maintenance). Secured with three stainless-steel tool-less latches for tight seal to ensure a clean lens and optical assembly. Lens is made of clear tempered high-transmission soda-lime glass. Optical and electrical compartment is completely sealed by using a single piece, high temperature, silicone molded rubber gasket.

OPTICAL - Offered with IES Type II Medium faceted optics. Reflector is made from highly reflective lighting grade die formed aluminum for consistent optical performance. All photometry is performed by a certified independent photometric testing laboratory.

LIGHT SOURCE - Luminaire features LEP™ light source from LUXIM. The system can be dimmed. Lamp starts rapidly typically reaching full output within 65 seconds; hot re-strike time is 2 minutes.

ELECTRICAL - Luminaire supplied with high power factor (>.94) and low THD (<20%) AC/DC power supply (at full load). Surge protection built in with 10kV suppression in accordance with IEEE/ANSI C62.41.2. All components are UL recognized. Luminaire components are rated from -40C to +45C ambient.

MOUNTING - Supplied for 2-3/8" round mast arm with ±15° tilt. Down light only. Vibration tested for roadway specification ANSI C136.3

FINISH - Luminaire color is natural (RAL9006). Finish is marine grade, polyester powder coat with UV inhibitors. Other colors are available - consult factory for more color options.

COMPLIANCE - Luminaire is designed for operation in wet locations. Tested to IP65 per IEC 60529. CE product safety compliant, tested to IEC 60598-2-3. International Dark Sky approved. Tested per LM79 standards.



IP65

LAMP OPTIONS

Product Code	41-01	41-02	25-03
Lamp Lumens	23,000	17,000	11,000
Watts	270	270	160
Life Hours	50,000	50,000	50,000
CRI	72	92	70
CCT	5200	5200	5800

WEIGHT

Pounds	Kilograms
34	15.5

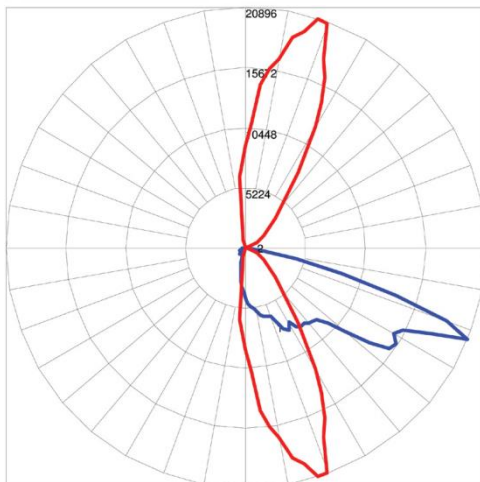
WIND LOADING

Luminaire Configuration	EPA
Single Luminaire	0.6 ft ²
Twin Luminaire 180°	1.2 ft ²
Twin Luminaire @ 90°	0.8 ft ²
3-Way, 4-Way	1.5 ft ²

RSeries Roadway Luminaire

PHOTOMETRICS

Plot generated with nominal STA-41-01 light source.



Maximum Candela = 20895.626
 Located At Horizontal Angle = 72.5,
 Vertical Angle = 67.5

1 - Vertical Plane Through Horizontal Angles
 (72.5 - 252.5) (Through Max. Cd.)

2 - Horizontal Cone Through Vertical Angle
 (67.5) (Through Max. Cd.)

ORDERING CODES

Product	LEP Series	Optics	Voltage	Options	Mounting	Lens/ Mesh
R400	(411) STA41-01	(T2) Type II	(V1) 120-277V	(0) Not Applicable	(K) 2-3/8" Knuckle	(C_) Clear Tempered Glass*
	(412) STA41-02		(V3) 277-480V	(W) Wireless		(S_) Solite (Prismatic) Tempered Glass
	(253) STA25-03			(P) Twist Lock Photocell with receptacle		(A_) Anti-Reflective High Transmittance Glass
				(R) Twist Lock Photocell (Receptacle Only)		(_1) With Mesh**
						(_2) Without Mesh

*Clear tempered glass is standard. **With mesh, luminaire is FCC Part 18 Class A compliant..

ORDERING ENTRY

Contractor Code	QTY	Product	LEP Series	Optics	Voltage	Options	Mounting	Lens/ Mesh
Example	100	R400	411	T2	V1	0	K	C1

ORDER INFORMATION

Contact: _____ Company: _____

Phone: _____ Fax: _____ Email: _____

Project Name/Description: _____